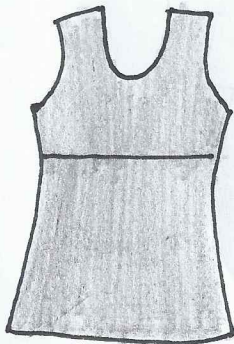
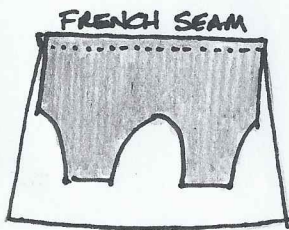
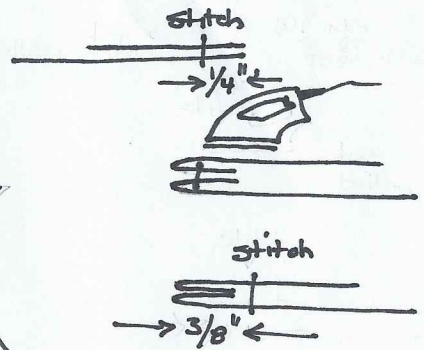


Stacy Kate Ruffle Cami A

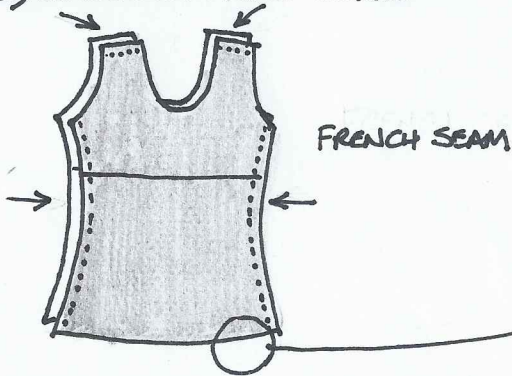
1) JOIN TOP AND BOTTOM



FRENCH SEAM:



2) SHOULDER AND SIDES



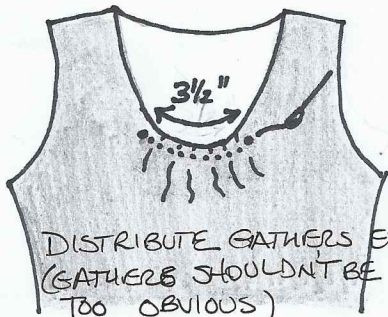
3) HEM

~~NO FINISH~~
~~LEAVE RAW~~

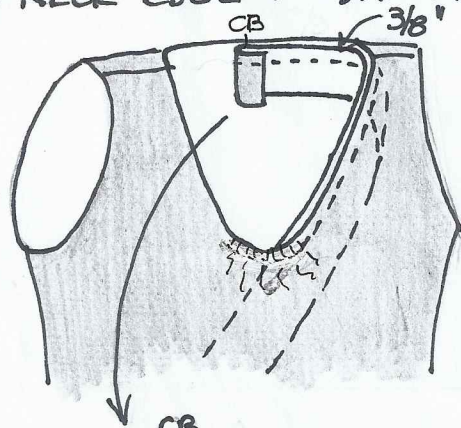
RUFFLE WILL BE ATTACHED AT THE SHOP

4) GATHER

XS, S, M, L... 4" → 3 1/2"
XL, 2X... 5" → 4"



5) NECK EDGE + 6) ARM HOLE



7) TAGS

