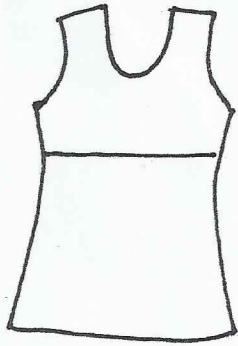
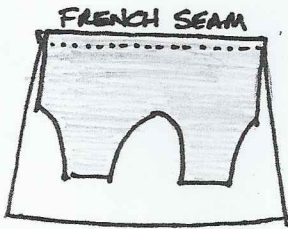
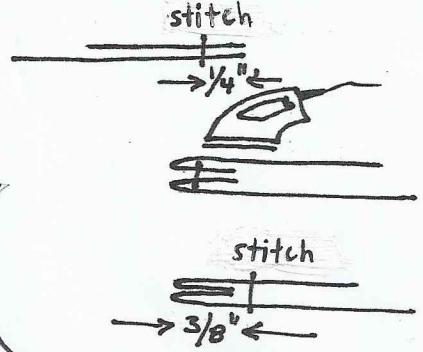


Stacy Kate Simple Cami A

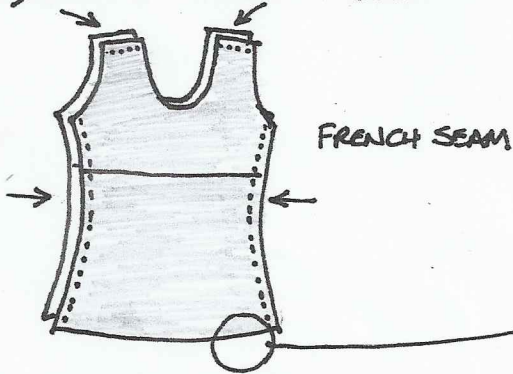
1) JOIN TOP AND BOTTOM



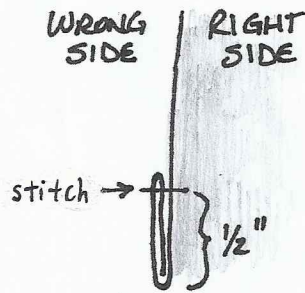
FRENCH SEAM:



2) SHOULDER AND SIDES

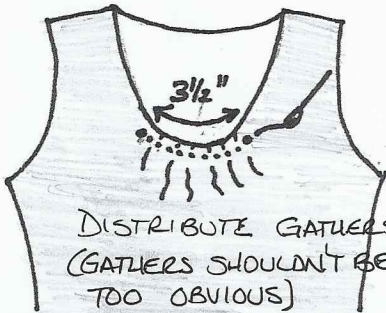


3) HEM

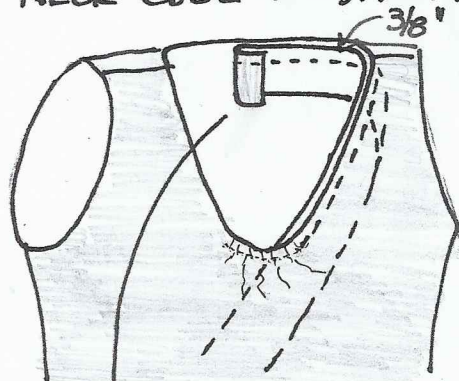


4) GATHER

XS, S, M, L ... 4" → 3 1/2"
XL, 2X ... 5" → 4"



5) NECK EDGE + 6) ARM HOLE



7) TAGS

